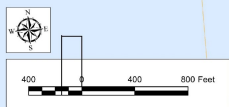
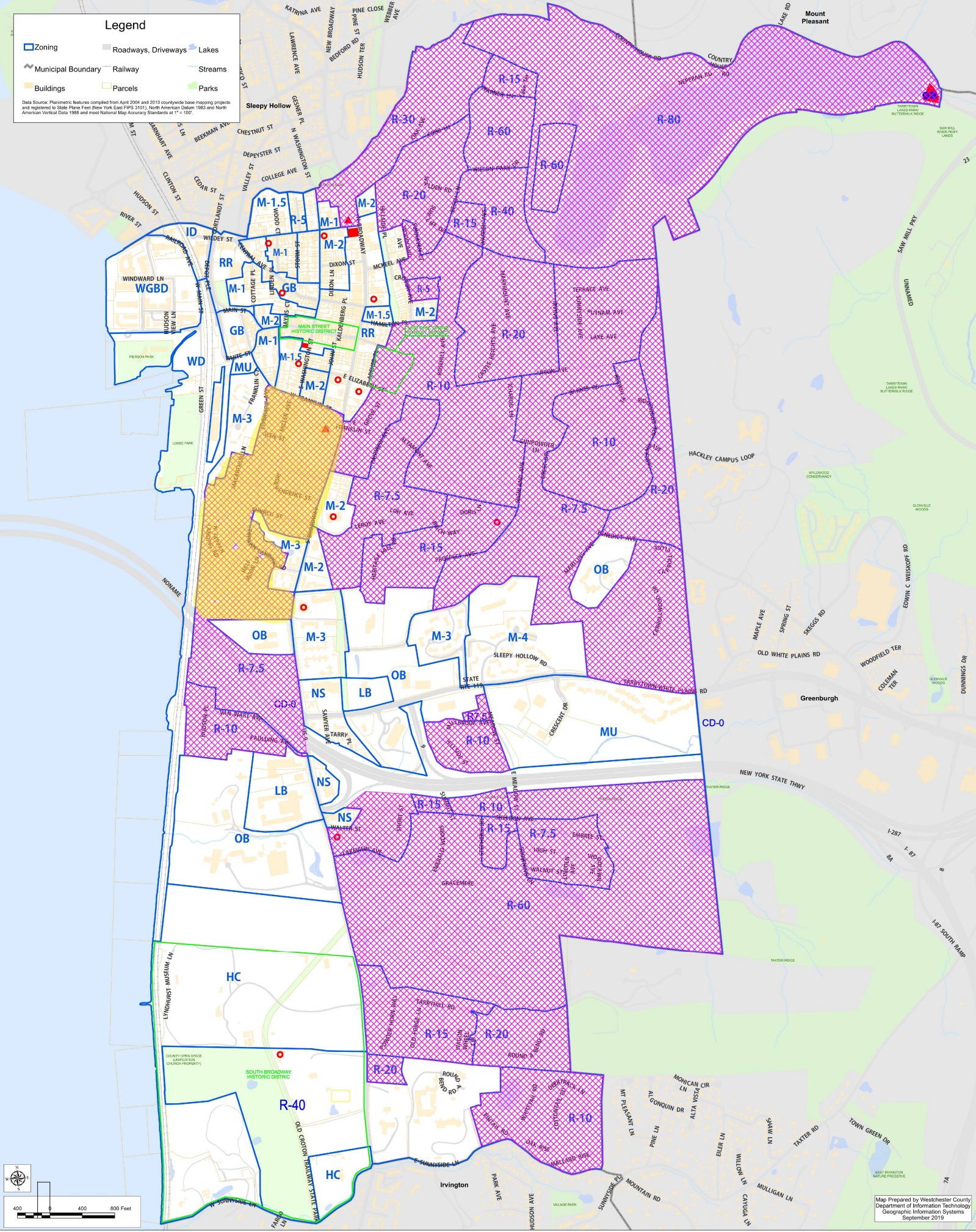


# TARRYTOWN, NEW YORK

## Legend

- Zoning
- Roadways, Driveways
- Lakes
- Municipal Boundary
- Railway
- Streams
- Buildings
- Parcels
- Parks

Data Source: Planimetric features compiled from April 2004 and 2013 countywide base mapping projects and registered to State Plane Feet (New York East (SPS 3101), North American Datum 1983) and North American Vertical Data 1988 and most National Map Accuracy Standards at 1" = 100'



Map Prepared by Westchester County Department of Information Technology Geographic Information Systems September 2019