

Scenic Hudson

Making the Hudson Valley a Safe and Welcoming Place
for Everyone to Live, Work, Play and Create



**Village of Tarrytown
Board of Trustees
March 16, 2022
Jeffrey Anzevino, AICP
Director of Land Use Advocacy**

KaN Landscape Design





OUR MISSION

Scenic Hudson preserves land and farms and creates parks that connect people with the inspirational power of the Hudson River, while fighting threats to the river and natural resources that are the foundation of the valley's prosperity.

OUR VISION

The Hudson Valley is a community of informed and engaged citizens working to make the region a model of vibrant riverfront cities and towns linked by inviting parks and trails, beautiful and resilient landscapes, and productive farms.

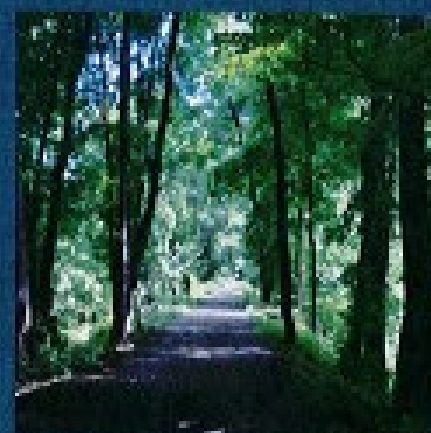
Scenic Hudson Riverwalk Park at Tarrytown

RIVERFRONT REVITALIZATION + PARK + RIVER ACCESS



Sleepy Hollow-Tarrytown Trails Strategy

Sleepy Hollow-Tarrytown Trails Strategy



Village Approval Draft
5.25.16

New NY Bridge Focus Area

Sleepy Hollow/Tarrytown Trails Strategy



RiverWalk

Opportunity

Complete RiverWalk in Tarrytown by connecting Losee Park in the north to the existing trail in the south under the New NY Bridge.

Challenges

- 1 Insufficient land between tracks and river, and need to cross the tracks.
- 2 Neighborhood concerns about additional trail traffic.

New NY Bridge

Opportunity

Connect the Shared Use Path over the bridge to existing trails, such as the Old Croton Aqueduct and RiverWalk.

Challenges

- 1 Crossing Route 9 to access regional trails.
- 2 Significant change in elevation between the bridge and trails.

Old Croton Aqueduct

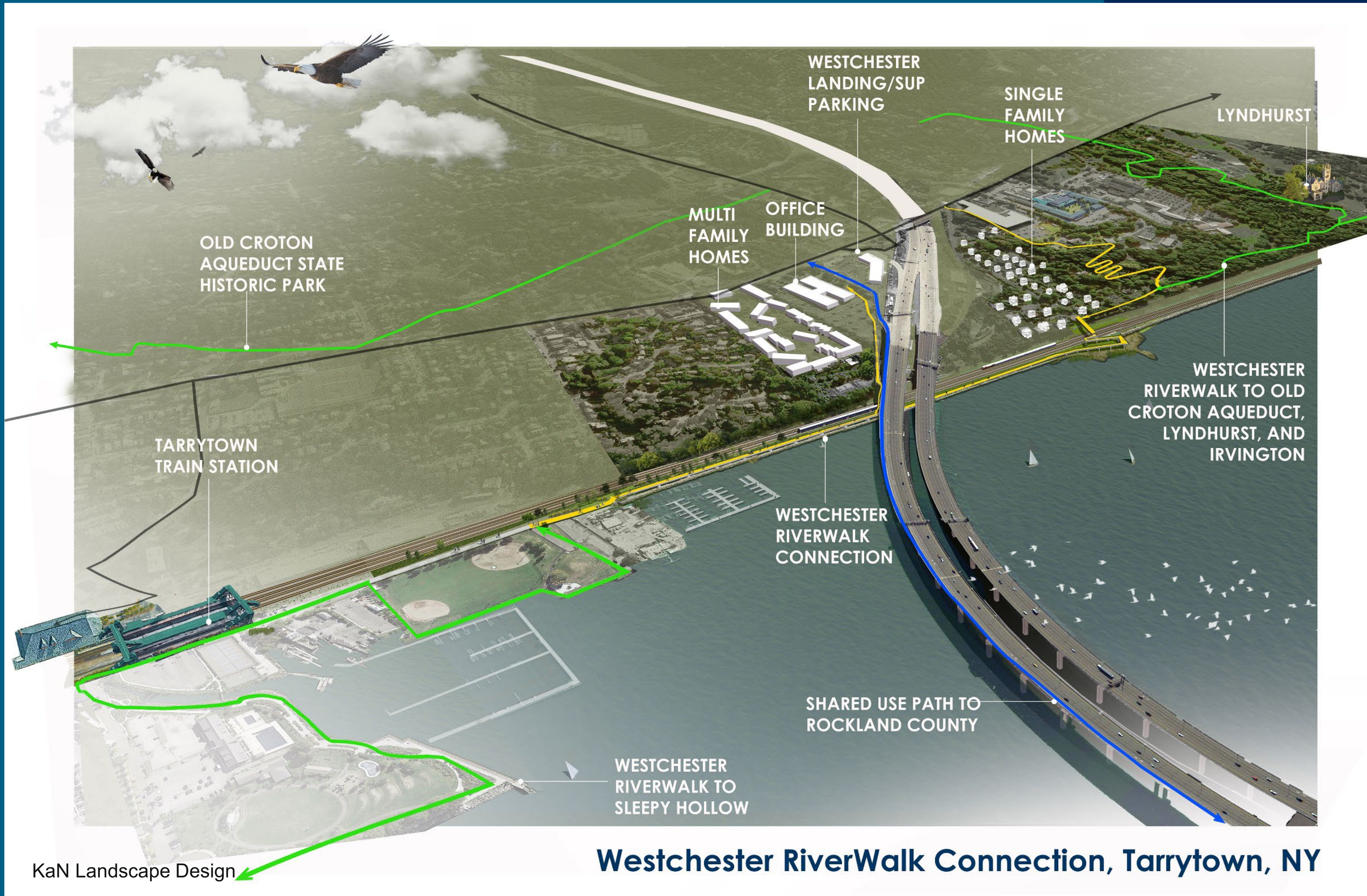
Opportunity

Overcome barriers to use of and access to a linear park and off-road trail.

Challenges

- 1 Encroachment along the trail.
- 2 Parking lots built on park land.
- 3 Trail is cut off by I-87 and runs into a sound wall.

Westchester Riverwalk Connection



Westchester Riverwalk Connection

ADDRESSES SEVERAL PROBLEMS WITH ONE INITIATIVE

- Fills a 0.9-mile gap in Westchester RiverWalk
- Provides transportation alternatives to automobile travel
- Creates a pedestrian link between the Governor Mario M. Cuomo Bridge Shared Use Path and Tarrytown Metro-North



Westchester Riverwalk Connection

ADDRESSES SEVERAL PROBLEMS WITH ONE INITIATIVE

- Increases riverfront access
- Connects people with nearby historic sites
- Provides opportunities for exercise and active recreation
- Consistent with Tarrytown's draft LWRP
- Supports the Mid-Hudson Regional Economic Development
- Council's LIVE, WORK and PLAY strategy



KaN Landscape Design

Westchester Riverwalk Connection: Recent Progress



KaN Landscape Design

Three Trail Connection Options

Option A Water and Land Trail Connection

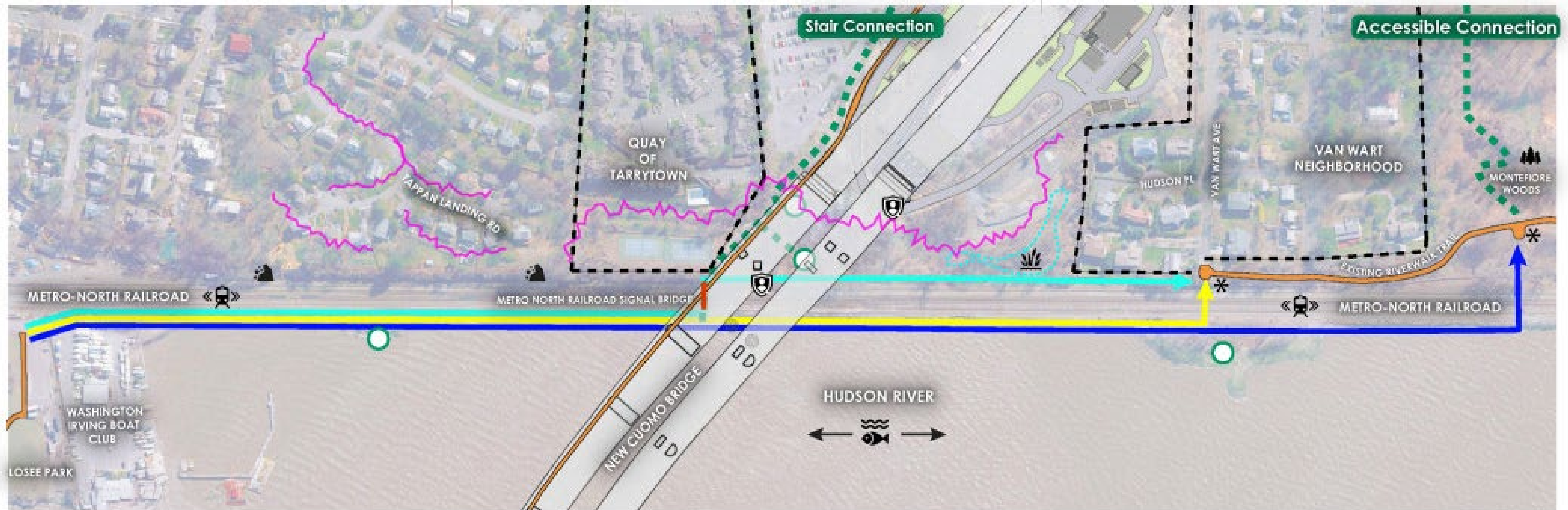
- 1,325' long waterfront esplanade along river
- One new Metro-North Railroad crossings at former signal bridge
- Ramp connects to Van Wart neighborhood along existing retaining wall
- Path connects to Montefiore property and JCC on the Hudson
- No path access waterfront peninsula
- Potential waterfront overlooks / fishing piers

Option B Van Wart Trail Connection

- 2,900' long waterfront esplanade along river
- Two Metro-North Railroad crossings at former signal bridge and Van Wart Node
- Path connects to Van Wart neighborhood
- Path access waterfront peninsula with overlooks
- Potential waterfront overlooks / fishing piers

Option C Montefiore Trail Connection

- 3,440' long waterfront esplanade
- Two Metro-North Railroad crossings at former signal bridge and Montefiore Node
- Path access to waterfront peninsula with overlooks
- Potential waterfront overlooks / fishing piers
- Minimal impact to Van Wart neighborhood

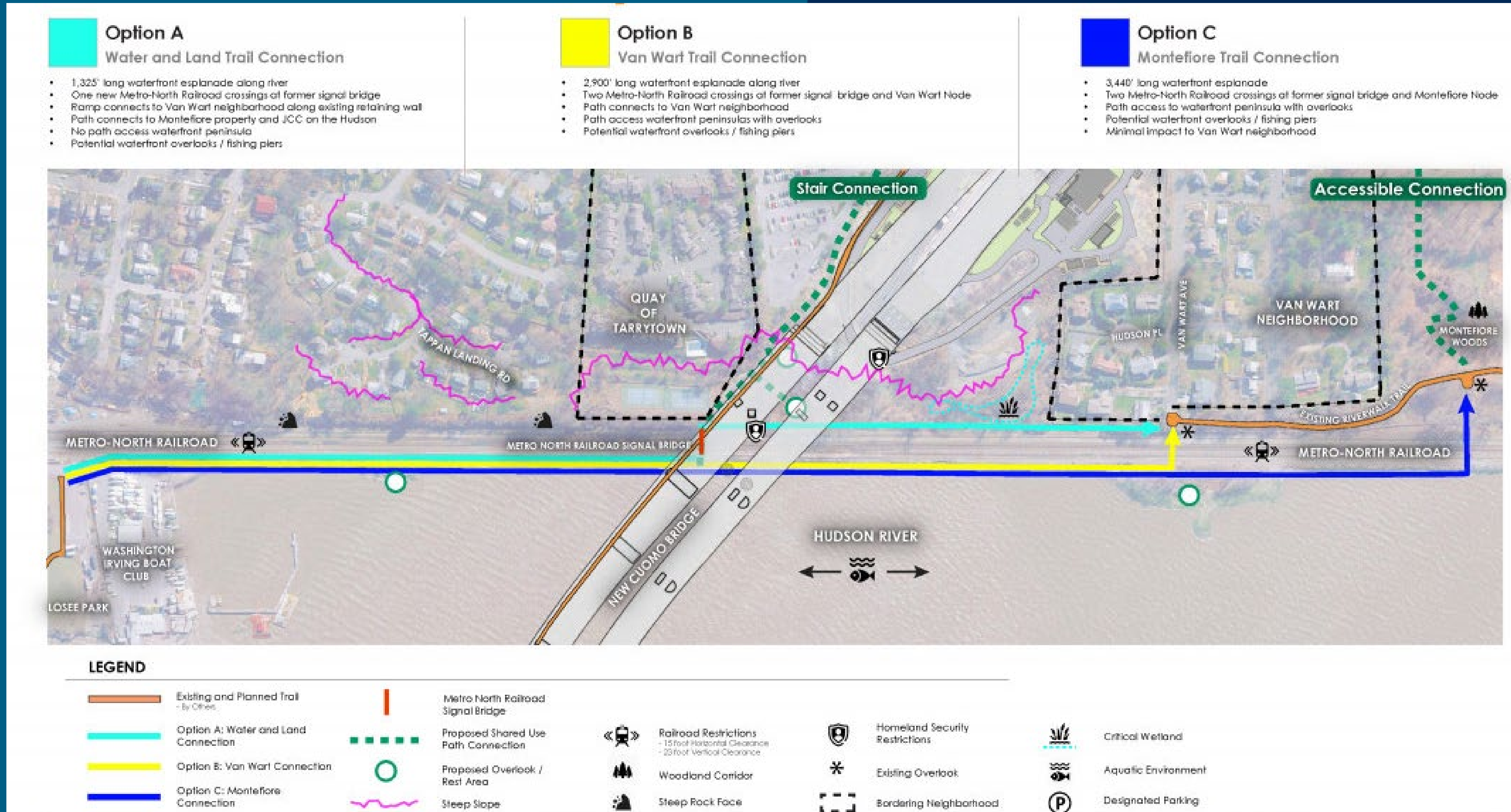


LEGEND

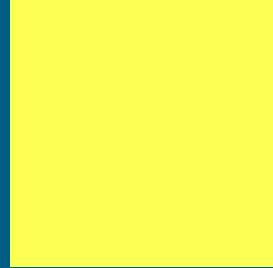
 Existing and Planned Trail - By Other	 Metro North Railroad Signal Bridge	 Railroad Restrictions - 15 foot Horizontal Clearance - 20 foot Vertical Clearance	 Homeland Security Restrictions	 Critical Wetland
 Option A: Water and Land Connection	 Proposed Shared Use Path Connection	 Woodland Corridor	 Existing Overlook	 Aquatic Environment
 Option B: Van Wart Connection	 Proposed Overlook / Rest Area	 Steep Rock Face	 Bordering Neighborhood	 Designated Parking
 Option C: Montefiore Connection	 Steep Slope			

Option A: Water & Land Trail Connection

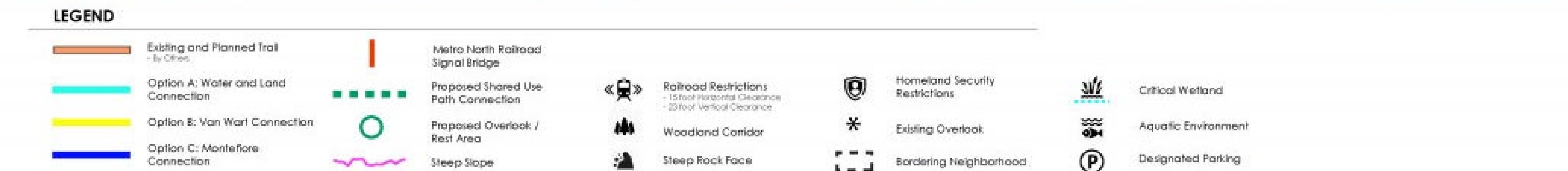
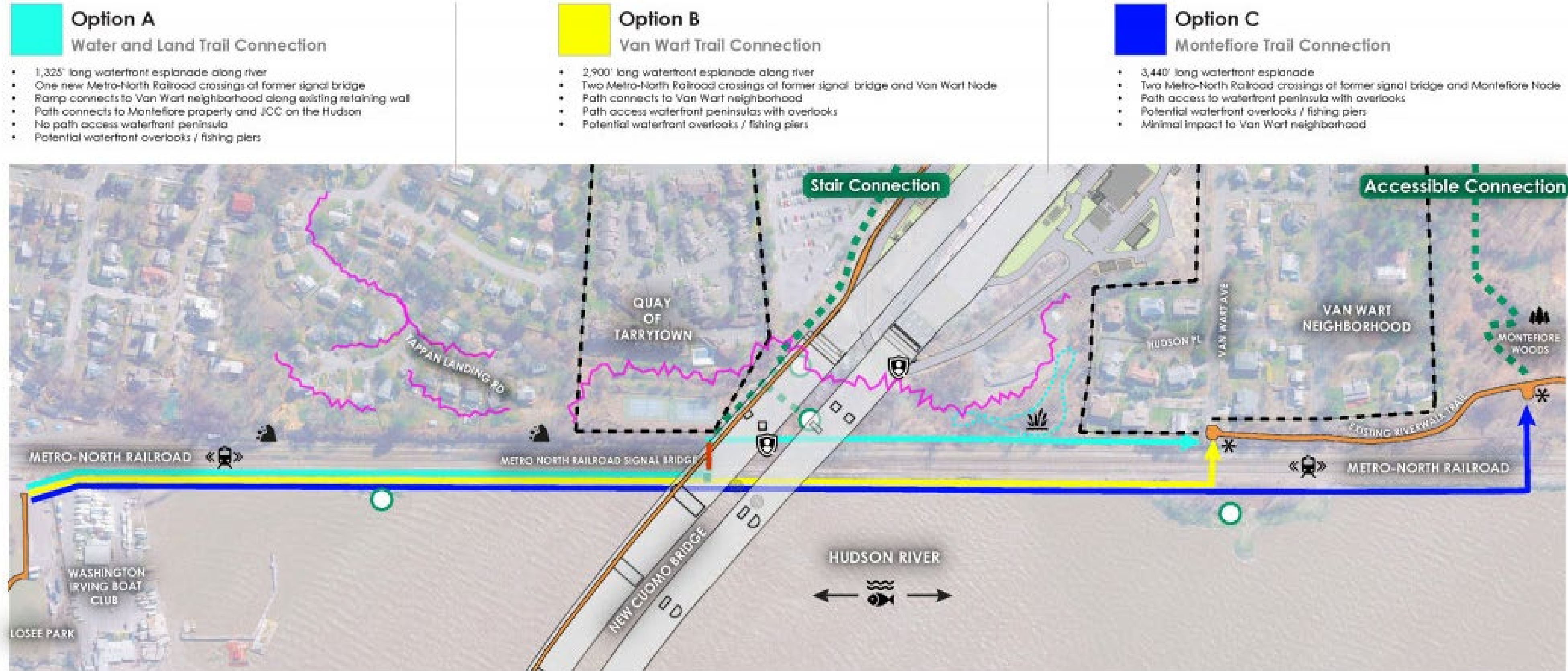
- ▶ 1,325'-long waterfront esplanade along river
- ▶ One new Metro-North Railroad crossing at former signal bridge
- ▶ Ramp connects to Van Wart neighborhood along existing retaining wall
- ▶ No path access to waterfront peninsula
- ▶ Potential waterfront overlooks/fishing piers



Option B: Van Wart Trail Connection



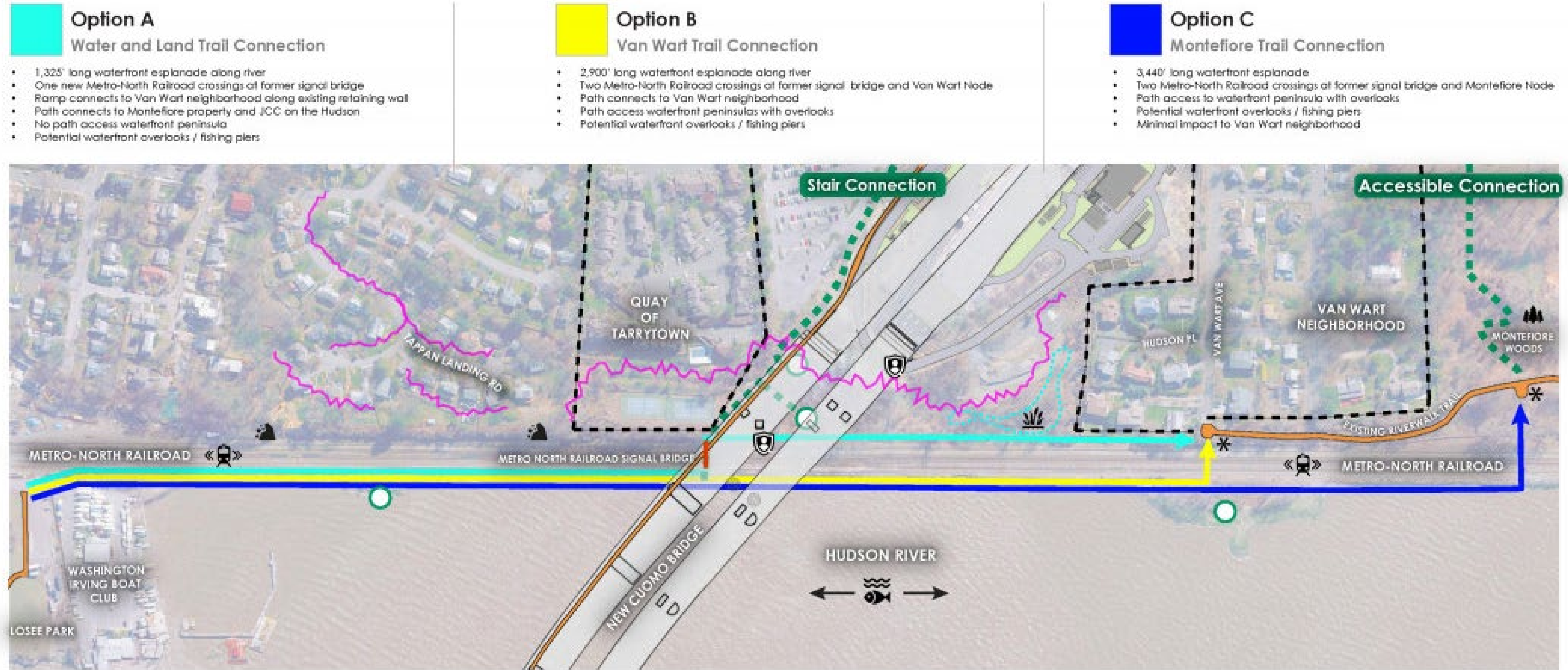
- ▶ 2,900'-long waterfront esplanade along river
- ▶ Two Metro-North Railroad crossings at former signal bridge and Van Wart Node
- ▶ Path connects to Van Wart neighborhood
- ▶ Path access to waterfront peninsula with overlooks
- ▶ Potential waterfront overlooks/fishing piers



Option C: Montefiore Trail Connection



- ▶ 3,440'-long waterfront esplanade along river
- ▶ Two Metro-North Railroad crossings at former signal bridge and Montefiore Node
- ▶ Path access to waterfront peninsula with overlooks
- ▶ Potential waterfront overlooks/fishing piers
- ▶ Minimal impact to Van Wart neighborhood



LEGEND

Existing and Planned Trail - by Other	Metro North Railroad Signal Bridge	Railroad Restrictions - 15 foot Horizontal Clearance - 20 foot Vertical Clearance	Homeland Security Restrictions	Critical Wetland
Option A: Water and Land Connection	Proposed Shared Use Path Connection	Woodland Corridor	Existing Overlook	Aquatic Environment
Option B: Van Wart Connection	Proposed Overlook / Rest Area	Steep Rock Face	Bordering Neighborhood	Designated Parking
Option C: Montefiore Connection	Steep Slope			

Westchester Riverwalk Connection



KaN Landscape Design

Westchester Riverwalk Connection: Next Steps



KaN Landscape Design

Questions

