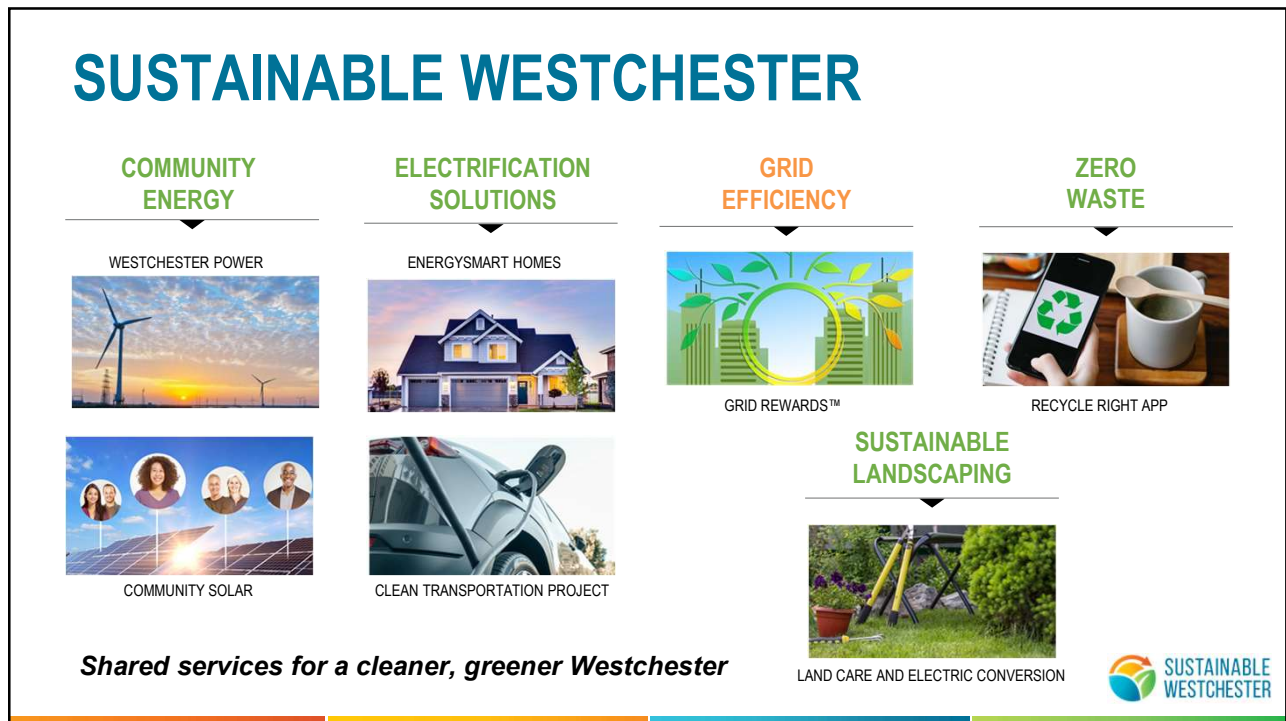




1



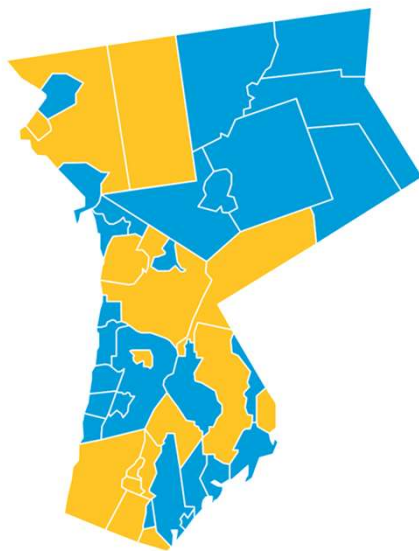
2

GETTING READY FOR OPT-OUT COMMUNITY SOLAR CREDITS

- Sustainable Westchester is preparing to launch an exciting, new Solar Credit offering within the Westchester Power program that will provide guaranteed savings to participating households and small businesses.
- The offering prioritizes the delivery of the Solar Credit savings to low- to moderate-income households. We will start with those enrolled in the existing utility's low-income assistance program, i.e. Assistance Program Participants.
- Your first step is to amend your local CCA enabling law to add the Solar Credit to accompany the Supply offering. We have prepared a template of the enabling law for you. Look out for our email!
- For more information, please contact Leo Wiegman, Director of Solar Programs, at leo@sustainablewestchester.org.



3



WESTCHESTER POWER CCA MUNICIPAL PARTICIPATION

Ardsley
Bedford
Croton-on-Hudson
Dobbs Ferry
Greenburgh
Hastings-on-Hudson
Irvington

Larchmont
Lewisboro
Mamaroneck Village
Mamaroneck Town
Mount Kisco
New Castle
New Rochelle

North Salem
Ossining Village
Ossining Town
Peekskill
Pelham Village
Pleasantville
Pound Ridge

Rye Brook
Rye City
Sleepy Hollow
Somers
Tarrytown
White Plains
Yonkers

29

Municipalities

147,000

Residents and
Small Businesses



4

WESTCHESTER POWER PROGRAM

- Program of Sustainable Westchester – the flagship energy program
- Provides clean 100% New York State renewable energy at a competitive prices
- It is Community Energy program that affects your electricity SUPPLY only



5

ELECTRIC INDUSTRY NEED-TO-KNOW

ELECTRICITY GENERATION (SUPPLY) AND DELIVERY



SOURCE (SUPPLY)



**WESTCHESTER
POWER**

contracts and administers
electricity supply



DELIVERY



CON EDISON

delivers energy, maintains lines,
bills customers



CUSTOMER



YOU

have energy choice, support
clean energy

Adapted from original Lean Energy image



6

OPT-OUT FORMAT – COMMUNITY DEFAULT

- There is always a default supply (Con Edison is an opt-out format also)
- Communities that participate in the Westchester Power program have the decision about that default supply brought into the community
 - Program is approved as an alternative to confusing ESCO offerings
 - Cost-effective means of bringing more renewable energy to the community
- Opt-out structure ensures that we are able to fully leverage the buying clout of all participating municipalities



7

WESTCHESTER IS MAKING A HUGE IMPACT!



=



or



	METRIC TONS OF CO ₂ MITIGATED	CARS TAKEN OFF THE ROAD FOR 1 YEAR	TREE SEEDLINGS FOR 10 YEARS
County-wide	1,100,000	293,000	18.2 million
Tarrytown	30,000	6,500	500,000



8

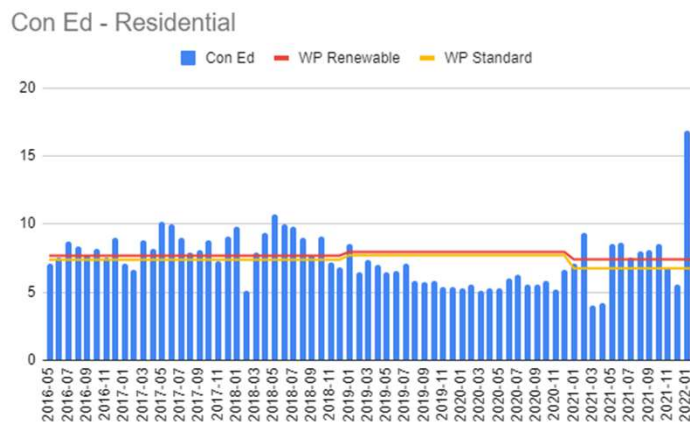
RATES / SUPPLY OPTIONS / TERMS

- Current Westchester Power rates residents in Con Ed territory are fixed through June 30, 2022:
 - **100% Renewable Supply = 7.41 cents/kWh**
 - **Standard Supply = 6.75 cents/kWh**
- Since Con Ed rates are variable month to month and we cannot know what they will be in the future, the program cannot guarantee savings
- Remember though Con Ed is “mixed supply” that includes fossil fuels, not 100% renewable energy so comparing the two is a little “apples to oranges”
- Consumer-friendly: opt-out, opt-back in, or switch supplies at any time – fixed rate serves as a cap



9

RATES TO-DATE



10

Current Contract Rate Performance

1/1/2021 thru 2/28/2022		Estimated Avg. Charge by Supply		
Customer Type	Avg. Monthly Account Use	Con Edison	WP 100% Renewable	WP Standard
Residential	506 kWh	\$480	\$450	\$410
Small Commercial	518 kWh	\$472	\$441	\$401

11

2022 – WESTCHESTER POWER 2.0, EVOLUTIONARY IMPERATIVES

Expanding Westchester Power capacity for environmental and economic impact

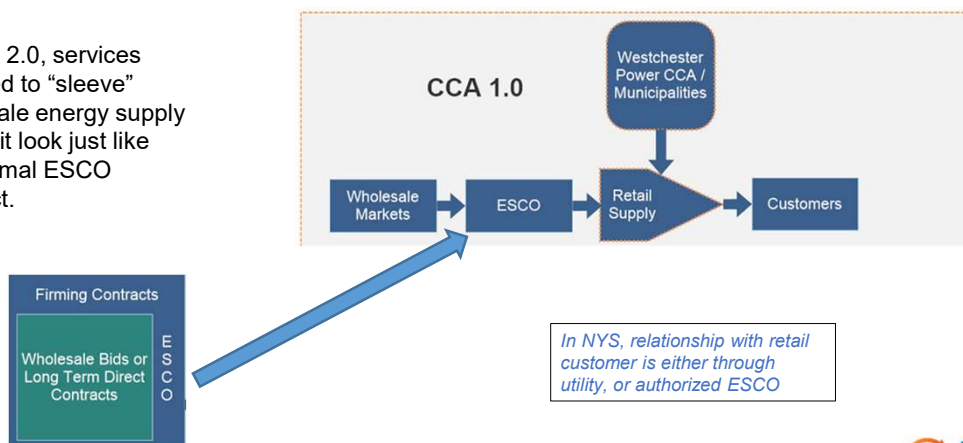
- Increasing the supplier pool for enhanced competition
- Building capacity to support longer term contracts and more flexible supply formats
- Which in turn can lead to long term price stability and more renewable construction



12

EXPANDED SUPPLIER OPTIONS

In CCA 2.0, services provided to “sleeve” wholesale energy supply makes it look just like our normal ESCO contract.



13

AUCTION DAY – BOTH RETAIL AND WHOLESALE

- We will run traditional full retail ESCO auctions and auction for wholesale energy block on the same day.
- We will then be able to add the known sleeving service cost to the wholesale block and compare to the retail ESCO offers and select the best.



14

TIMELINE / NEXT STEPS

Contract Extension - to provide time for CCA 2.0
(looking for 5 months)

- **Confirming price target (new market price)**
- **Early/Mid April: Participation MOU needed as usual to facilitate acceptance of offer**
- Mid April: Contract signing (immediately after all MOU's executed)
- Mid April thru Mid May: Prep, Opt-out mailing
- Mid June: end of opt-out period
- July 1: Participants in new extension as of their meter read date

New Contract Auction via CCA 2.0 format

- Participation MOUs signed off: by mid August
- Late August: Auction
- Early September: Contract signing (immediately after auction award)
- Mid September thru Mid October: Prep, Opt-out mailing
- Mid November: end of opt-out period
- December 1: Participants in new extension as of their meter read date



15

Your action can help your community
build a clean energy future!



Questions?

Sustainable Westchester General
info@sustainablewestchester.org

Westchester Power
westchesterpowers@sustainablewestchester.org

Call us at 914-242-4725



16